

*mosa*<sup>®</sup>



# UBAR Bubble Water

## 使用說明書

初次使用mosa UBAR氣泡水機前，請閱讀本說明書  
充分了解操作方式及注意事項後，可創造最佳飲用口感

## 使用说明书

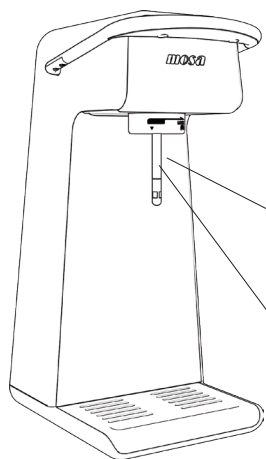
初次使用mosa UBAR气泡水机前，请阅读本说明书  
充分了解操作方式及注意事项后，可创造最佳饮用口感

## User Guide

Before using the mosa UBAR Bubble Water Maker for the first time, please  
read this user guide carefully to understand the instructions and notices  
in order to make the best bubble water.

## 包裝內容物

拆封後如發現包裝中缺少任何零件  
請向購買店家尋求協助



mosa UBAR氣泡水機  
x 1



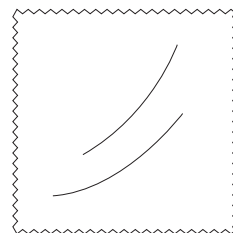
注水防塵套  
x 1  
(已安裝於氣泡水機上)



二氧化碳氣瓶425g  
x 1



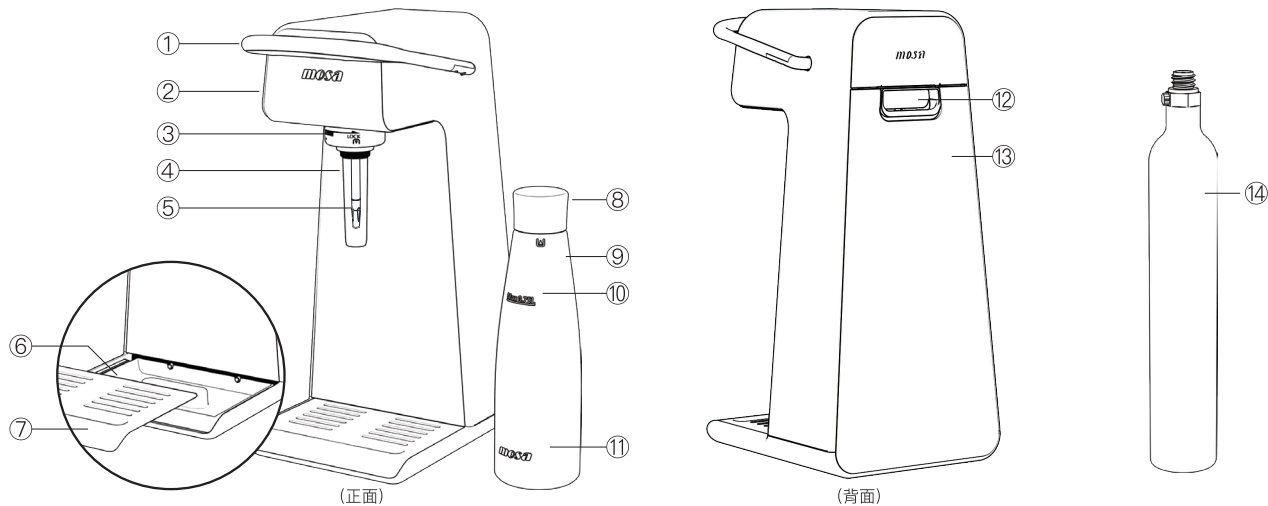
不鏽鋼水瓶  
x 2



擦拭布  
x 1

## 產品部件說明

- |              |                  |              |
|--------------|------------------|--------------|
| ① U形把手       | ⑥ 盛水盤            | ⑪ mosa LOGO  |
| ② 氣泡水機主體     | ⑦ 不鏽鋼托盤          | ⑫ 後背蓋門扣      |
| ③ 卡扣標示       | ⑧ 瓶蓋             | ⑬ 後背蓋板       |
| ④ 注水防塵套(分離式) | ⑨ 不鏽鋼水瓶(1L)      | ⑭ 二氧化碳氣瓶425g |
| ⑤ 出氣管        | ⑩ 最高水位線標示(0.75L) |              |



## 二氧化碳氣瓶安裝方式

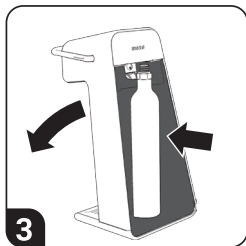
初次使用請先移除二氧化碳氣瓶瓶口防塵蓋



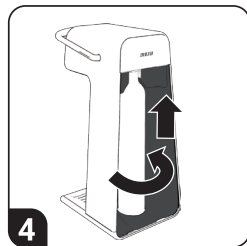
1 下壓後背蓋門扣，將背蓋取下



2 將氣瓶底部置入機身底部圓孔



3 輕抬機身，定位氣瓶



4 逆時針向上旋轉到頂



5 卡槽對準後蓋上背蓋

## 二氧化碳氣瓶拆卸方式



1 下壓後背蓋門扣，將背蓋取下



2 順時針向下旋開氣瓶



3 輕抬機身，取出氣瓶



4 取出氣瓶

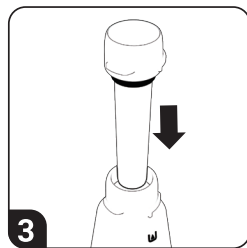


5 卡槽對準後蓋上背蓋

## 水瓶裝水方式



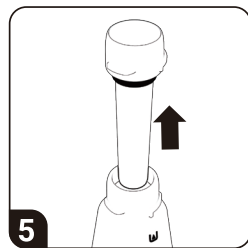
1 從氣泡水機將注水防塵套旋下



3 將注水防塵套定位於水瓶瓶口(紅色部分壓入瓶口)

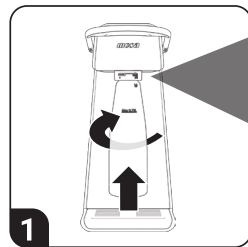


4 透過注水防塵套注水,直到水位抵達防塵套頂部之紅線

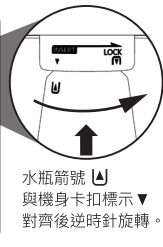


5 將注水防塵套取出

## 氣泡水製作方式



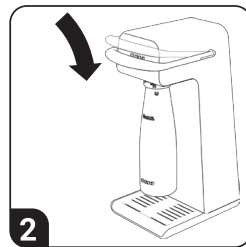
1 將水瓶對準準氣口,向上旋轉到定位。



水瓶箭號 U 與機身卡扣標示 ▼ 對齊後逆時針旋轉。



當水瓶箭號 U 與機身卡扣標示 ▼ 對齊,即固定水瓶。



2 下壓U形把手,聽見機台後方出氣音後即放手。



3 放開U形把手後短暫等待後會聽見洩氣音,洩氣音停止後即可將水瓶旋轉取下。

## 建議事項

- 1 建議使用2~7度C的冰水倒入不鏽鋼水瓶製作氣泡水，打出來的氣泡水會有較佳的氣泡口感。
- 2 請務必依照說明書指示方式裝水，若不使用注水防塵套，注水太多會造成機台損壞或冰水溢出，注水太少恐無法製成氣泡水；若不慎遺失注水防塵套，直接注水水量為750~760cc。
- 3 當取下已打氣的水瓶後，將注水防塵套安裝回氣泡水機，避免遺失以及保護出氣管。
- 4 若未在10分鐘之內飲用完畢，則建議將水瓶蓋子蓋上並且放置於冰箱以避免二氧化碳逸散影響口感。

## 清潔須知

項目	清潔方式	注意事項	使用洗碗機
mosa UBAR氣泡水機	擦拭	勿使用強酸鹼	×
水瓶	比照一般容器	勿刮傷表面	○
盛水盤	擦拭	勿刮傷表面	○
注水防塵套 <sup>®</sup>	清水清洗	勿使用強酸鹼	×

## 不適用情況與材料

- 製作氣泡水時，水瓶僅能裝飲用水；其餘任何飲品，請於製作完氣泡水之後再依個人需求另行調製。
- 當製作氣泡水時，只適用飲用水，不得加入其他飲品或食材，如：酒精飲品、牛奶、果汁、糖漿、蜂蜜...等食材均不得加入。

## 安全須知

- 將本機台放置於水平穩固之平面，並避免孩童輕易接觸，避免機台的碰撞或摔落。
- 避免將機台、二氧化碳氣瓶放在陽光直射處，不得存放於高於40°C或低於0°C環境中，需遠離火源及熱源。
- 使用前請確定二氧化碳氣瓶與水瓶確實固定於正確位置。
- 緩慢下壓U形把手，並於聽見機台排氣音時即放手。
- 使用操作時請確定氣泡水機為直立使用。
- 請勿將氣泡水機放置於水中操作，嚴禁在操作過程取下水瓶或二氧化碳氣瓶。
- 嚴禁對未裝水之水瓶打氣。
- 不能自行拆卸機台並改造。

## 警告



### 爆炸警示：

熱源會使二氧化碳氣瓶壓力升高致使二氧化碳釋放，若發現有二氧化碳釋放的情況，請立刻移除熱源並等待二氧化碳釋放完畢後才可以觸摸二氧化碳氣瓶。



### 凍傷警示：

二氧化碳氣瓶使用過程因釋壓吸熱，氣瓶瓶身會有結霜現象，此時觸摸氣瓶瓶身可能引發皮膚凍傷。



### 結冰警示：

氣泡水機打氣過程因二氧化碳釋壓吸熱，水瓶中的飲用水中可能會產生有白色結冰情況，屬正常現象。



### 注意洩壓聲：

洩壓過程中若未聽到洩壓聲，需注意水瓶內尚有殘留壓力，請再次確認U型把手復歸到原始位置。



障  
礙  
排  
除

異常狀況	解決方式
U形把手下壓後 沒有二氧化碳注入水瓶內	<ol style="list-style-type: none"> <li>1. 二氧化碳氣瓶內二氧化碳用盡，帶著氣瓶前往服務站換購氣瓶。</li> <li>2. 安裝二氧化碳氣瓶時未旋轉至定位，請重新安裝至定位。</li> </ol>
U形把手下壓後有漏氣聲	<ol style="list-style-type: none"> <li>1. 水瓶沒確實旋轉固定到定位，取下水瓶並重新安裝。</li> <li>2. 二氧化碳氣瓶沒旋轉緊，取下二氧化碳氣瓶並重新安裝。</li> <li>3. 二氧化碳氣瓶氣密圈老化、破損，請依照更換方法操作更換二氧化碳氣瓶氣密圈。</li> <li>4. 若是在鬆開U形把手後僅有短暫漏氣聲，是排氣裝置正常作動結果，聲音停止後即可取下水瓶。</li> </ol>
U形把手未下壓但有漏氣聲	<ol style="list-style-type: none"> <li>1. 請檢查U形把手是否回復至mosa logo上方，若回彈後U形把手會遮擋logo，請檢查是否有物品卡住U形把手回彈。</li> <li>2. 若U形把手位置正常，請取下二氧化碳氣瓶，重新安裝。</li> </ol>
有氣打出來但無氣泡口感	<ol style="list-style-type: none"> <li>1. 下壓U形把手確定聽到安全排氣聲後再放開U形把手。</li> <li>2. 水瓶裝水時請依照操作方法使用注水防塵套或是將水瓶內裝入750~760cc的水。</li> </ol>
U形把手下壓後 未聽見出氣警示聲	<ol style="list-style-type: none"> <li>1. 二氧化碳氣瓶內二氧化碳用盡，帶著氣瓶前往服務站換購氣瓶。</li> <li>2. 若可製作氣泡水但無警示聲，表示警示笛積水過多，將機台放置於乾燥處陰乾即可。</li> </ol>

## 產品保固

親愛的客戶 您好

感謝您購買mosa系列產品，希望能為您帶來美好使用體驗，便利及健康生活。

基本資料			
姓名		電話	
產品型號		購買日期	西元          年          月          日
產品批次號			

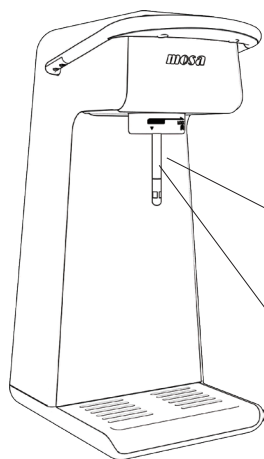
- 憑本產品保固卡，自購買日起算保固兩年，享有非耗材類免費維修服務。(未出具本保固卡或無法證明購買日期者，不在免費保固範圍)
- 由網路平台購買者，依保固卡之登記購買日期為保固起始日。
- 保固期間因下列情形而發生故障者，本公司將酌收材料工本費：
  - 未依使用說明書指示正確操作。
  - 自行不當修理、拆機、保養及改裝，導致產品故障或毀損者。
  - 天災、地震、鼠害、蟲害或環境因素、自然現象之不可抗力因素造成之故障或毀損。
  - 搬運所造成之故障或毀損。
- 遇有下列情形之一，本公司將按價收費：
  - 超過產品保固期者。
  - 未出示保固憑證者。
  - 保固卡如遇遺失或毀損，本公司恕不補發，請謹慎保存。
  - 本公司各產品均有零件之保存期限，若超過期限，儘量以現行生產產品之類似零件代用修理。
  - 使用非mosa品牌之二氧化碳氣瓶，造成產品故障或毀損者。
- 不鏽鋼水瓶為耐壓水瓶，屬耗材類，自購買日起保固壹年。如不鏽鋼瓶有強烈碰撞時，或發現瓶身外觀有變形、凹陷、裂痕、變色狀況會有爆裂危險，需馬上更換新品，千萬不可再使用。

經銷商店章

產品保固標籤

## 包装内容物

拆封后如发现包装中缺少任何零件  
请向购买店家寻求协助



mosa UBAR 气泡水机  
x 1



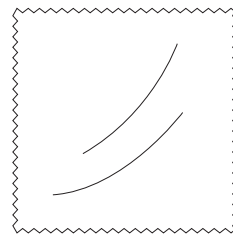
注水防尘套  
x 1  
(已安装于气泡水机上)



二氧化碳气瓶425g  
x 1



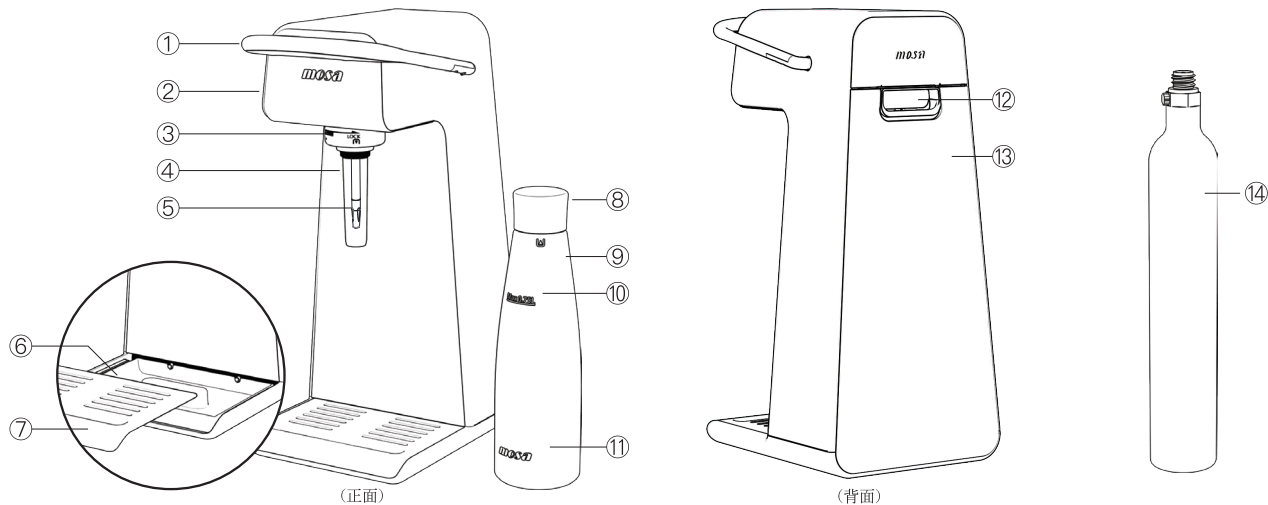
不锈钢水瓶  
x 2



擦拭布  
x 1

## 产品部件说明

- |              |                  |              |
|--------------|------------------|--------------|
| ① U形把手       | ⑥ 盛水盘            | ⑪ mosa LOGO  |
| ② 气泡水机主体     | ⑦ 不锈钢托盘          | ⑫ 后背盖门扣      |
| ③ 卡扣标示       | ⑧ 瓶盖             | ⑬ 后背盖板       |
| ④ 注水防尘套(分离式) | ⑨ 不锈钢水瓶(1L)      | ⑭ 二氧化碳气瓶425g |
| ⑤ 出气管        | ⑩ 最高水位线标示(0.75L) |              |



## 二氧化碳气瓶安装方式

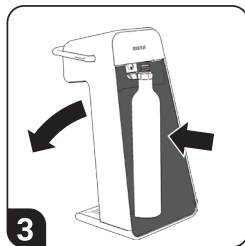
初次使用请先移除二氧化碳气瓶瓶口防尘盖



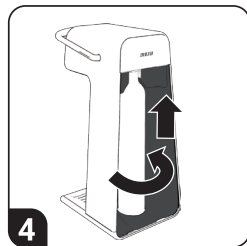
1 下压后背盖门扣，将背盖取下



2 将气瓶底部置入机身底部圆孔



3 轻抬机身，定位气瓶



4 逆时针向上旋转到顶



5 卡槽对准后盖上背盖

## 二氧化碳气瓶拆卸方式



1 下压后 背盖门扣，将背盖取下



2 顺时针向下旋开气瓶



3 轻抬机身，取出气瓶



4 取出气瓶

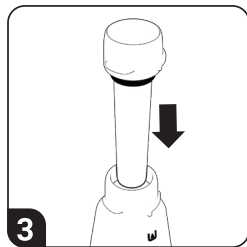


5 卡槽对准后盖上背盖

## 水瓶装水方式



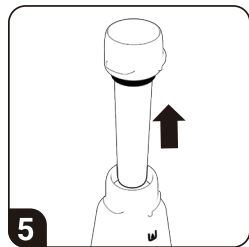
1 从气泡水机将注水防尘套旋下



3 将注水防尘套定位于水瓶瓶口 (红色部分压入瓶口)

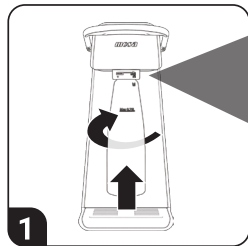


4 透过注水防尘套注水, 直到水位抵达防尘套顶部之红线

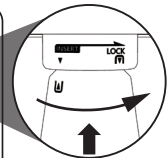




5 将注水防尘套取出

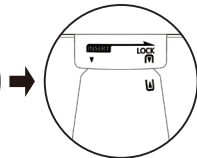
## 气泡水制作方式





1 将水瓶对准出气口, 向上旋转定位。



水瓶箭号  与机身卡扣标示  对齐后逆时针旋转。



当水瓶箭号  与机身卡扣标示  对齐, 即固定水瓶。



2 下压U形把手, 听见机台后 方出气音後即放手。



3 放开U形把手后短暂等待后会听见泄气音, 泄气音停止后即可将水瓶旋转取下。

## 建议事项

- 1 建议使用2~7度C的冰水倒入不锈钢水瓶制作气泡水，打出来的气泡水会有较佳的气泡口感。
- 2 请务必依照说明书指示方式装水，若不使用注水防尘套，注水太多会造成机台损坏或冰水溢出，注水太少恐无法制成气泡水；若不慎遗失注水防尘套，直接注水水量为750~760cc。
- 3 当取下已打气的水瓶后，将注水防尘套安装回气泡水机，避免遗失以及保护出气管。
- 4 若未在10分钟之内饮用完毕，则建议将水瓶盖子盖上并且放置于冰箱以避免二氧化碳逸散影响口感。

## 清洁须知

项目	清洁方式	注意事项	使用洗碗机
<b>mosa UBAR气泡水</b>	擦拭	勿使用强酸碱	×
<b>水瓶</b>	比照一般容器	勿刮伤表面	○
<b>盛水盘</b>	比照一般容器	勿刮伤表面	○
<b>注水防尘套</b> ®	清水清洗	勿使用强酸碱	×

## 不适用情况与材料

- 制作气泡水时，水瓶仅能装饮用水；其余任何饮品，请于制作完气泡水之后再依个人需求另行调制。
- 当制作气泡水时，只适用饮用水，不得加入其他饮品或食材，如：酒精饮品、牛奶、果汁、糖浆、蜂蜜…等食材均不得加入。

## 安全须知

- 将本机台放置于水平稳固之平面，并避免孩童轻易接触，避免机台的碰撞或摔落。
- 避免将机台、二氧化碳气瓶放在阳光直射处，不得存放于高於40°C或低於0°C环境中，需远离火源及热源。
- 使用前请确定二氧化碳气瓶与水瓶确实固定於正确位置。
- 缓慢下压U形把手，并於听见机台排气音时即放手。
- 使用操作时请确定气泡水机为直立使用。
- 请勿将气泡水机放置于水中操作，严禁在操作过程取下水瓶或二氧化碳气瓶。
- 严禁对未装水之水瓶打气。
- 不能自行拆卸机台并改造。

## 警告

### 爆炸警示：



热源会使二氧化碳气瓶压力升高致使二氧化碳释放，若发现有二氧化碳释放的情况，请立刻移除热源并等待二氧化碳释放完毕后才可以触摸二氧化碳气瓶。

### 冻伤警示



二氧化碳气瓶使用过程因释压吸热，气瓶瓶身会有结霜现象，此时触摸气瓶瓶身可能引发皮肤冻伤。



### 结冰警示

气泡水机打气过程因二氧化碳释压吸热，水瓶中的饮用水中可能会产生有白色结冰情况，属正常现象。



### 注意泄压声

泄压过程中若未听到泄压声，需注意水瓶内尚有残留压力，请再次确认U型把手复归到原始位置。



## 障碍排除

异常状况	解决方式
U形把手下压后 没有二氧化碳注入水瓶内	<ol style="list-style-type: none"> <li>1. 二氧化碳气瓶内二氧化碳用尽，带着气瓶前往服务站换购气瓶。</li> <li>2. 安装二氧化碳气瓶时未旋转至定位，请重新安装至定位。</li> </ol>
U形把手下压后有漏气声	<ol style="list-style-type: none"> <li>1. 水瓶没确实旋转固定到定位，取下水瓶并重新安装。</li> <li>2. 二氧化碳气瓶没旋转紧，取下二氧化碳气瓶并重新安装。</li> <li>3. 二氧化碳气瓶气密圈老化、破损，请依照更换方法操作更换二氧化碳气瓶气密圈。</li> <li>4. 若是在松开U形把手后仅有短暂漏气声，是排气装置正常作动结果，声音停止后即可取下水瓶。</li> </ol>
U形把手未下压但有漏气声	<ol style="list-style-type: none"> <li>1. 请检查U形把手是否回复至mosa logo上方，若回弹后U形把手会遮挡logo，请检查是否有物品卡住U形把手回弹。</li> <li>2. 若U形把手位置正常，请取下二氧化碳气瓶，重新安装。</li> </ol>
有气打出来但无气泡口感	<ol style="list-style-type: none"> <li>1. 下压U形把手确定听到安全排气声后再放开U形把手。</li> <li>2. 水瓶装水时请依照操作方法使用注水防尘套或是将水瓶内装入750~760cc的水。</li> </ol>
U形把手下压后 未听见出气警示声	<ol style="list-style-type: none"> <li>1. 二氧化碳气瓶内二氧化碳用尽，带着气瓶前往服务站换购气瓶。</li> <li>2. 若可制作气泡水但无警示声，表示警示笛积水过多，将机台放置于干燥处阴干即可。</li> </ol>

## 产品保固

亲爱的客户 您好

感谢您购买mosa系列产品，希望能为您带来美好使用体验，便利及健康生活。

基本资料			
姓名		电话	
产品型号		购买日期	西元          年          月          日
产品批次号			

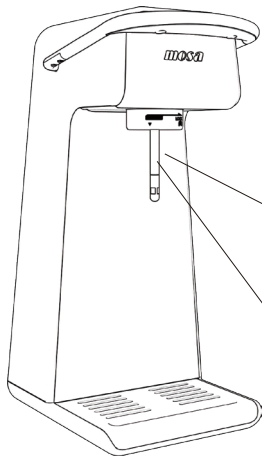
- 凭本产品保固卡，自购买日起算保固两年，享有非耗材类免费维修服务。（未出具本保固卡或无法证明购买日期者，不在免费保固范围）
- 由网路平台购买者，依保固卡之登记购买日期为保固起始日。
- 保固期间因下列情形而发生故障者，本公司将酌收材料工本费：
  - 未依使用说明指示正确操作。
  - 自行不当修理、拆机、保养及改装，导致产品故障或毁损者。
  - 天灾、地震、鼠害、虫害或环境因素、自然现象之不可抗力因素造成之故障或毁损。
  - 搬运所造成之故障或毁损。
- 遇有下列情形之一，本公司将按价收费：
  - 超过产品保固期者。
  - 未出示保固凭证者。
  - 保固卡如遇遗失或毁损，本公司恕不补发，请谨慎保存。
  - 本公司各产品均有零件之保存期限，若超过期限，尽量以现行生产品之类似零件代用修理。
  - 使用非mosa品牌之二氧化碳气瓶，造成产品故障或毁损者。
- 不锈钢水瓶为耐压水瓶，属耗材类，自购买日起保固壹年。如不锈钢瓶有强烈碰撞时，或发现瓶身外观有变形、凹陷、裂痕、变色状况会有爆裂危险，需马上更换新品，千万不可再使用。

经销商店章

产品保固标签

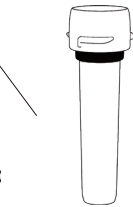
## Contents in the package

If you find any part missing after opening the package, please contact the shop where you purchased it for further assistance.



mosa UBAR Bubble Water Machine

x 1



Dust cover for the spout

x 1

(Pre-installed in the bubble water machine)



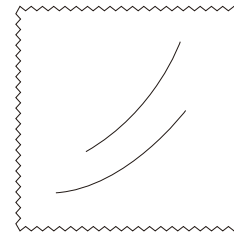
CO2 Cylinder, 425g

x 1



Stainless Steel Carbonating Bottle

x 2

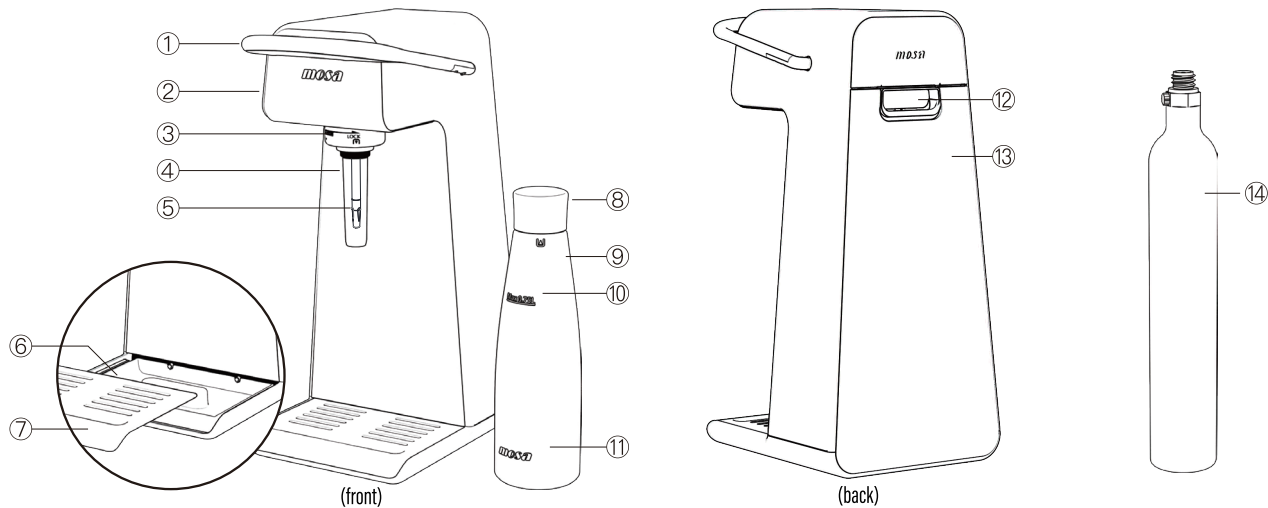


Cleaning Cloth

x 1

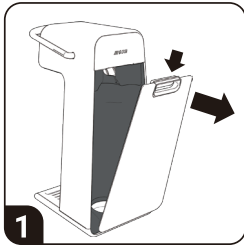
## Parts and Components

- ① U-shaped handle
- ② Bubble water machine
- ③ Snap-lock label
- ④ Dust cover for spout protection and filling aid
- ⑤ Carbonating tube
- ⑥ Water tray
- ⑦ Stainless steel tray
- ⑧ Cap
- ⑨ Carbonating bottle (1L)
- ⑩ Fill line ( 0.75L)
- ⑪ mosa LOGO
- ⑫ Back cover button
- ⑬ Back cover
- ⑭ CO2 Cylinder, 425g



## Installing the CO2 Cylinder

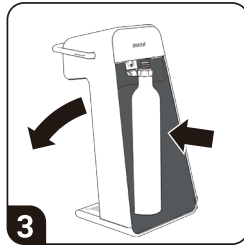
Remove the cap from the CO2 cylinder for initial use.



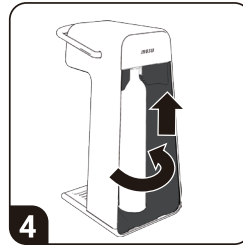
**1** Remove the back cover by pressing down on the cover button.



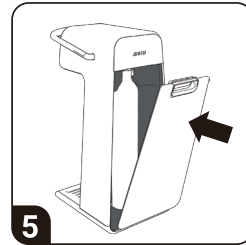
**2** Insert the bottom of the cylinder into the round hole at the bottom of the bubble water machine.



**3** Lift the bubble water machine gently to place the cylinder.

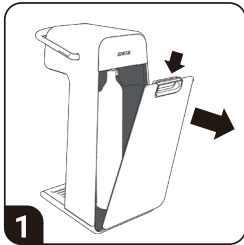


**4** Screw the cylinder and tighten it to the top by turning it counter-clockwise until it is firmly held in place.



**5** Close the back cover after it is aligned with the slot.

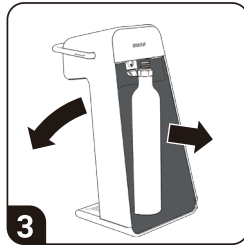
## Removing the CO2 Cylinder



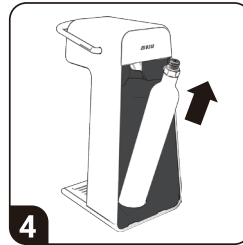
**1** Remove the back cover by pressing down on the cover button.



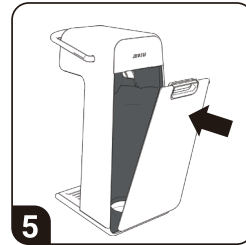
**2** Unscrew the cylinder downwards by turning it clockwise.



**3** Lift the bubble water machine gently to remove the cylinder.



**4** Remove the cylinder.

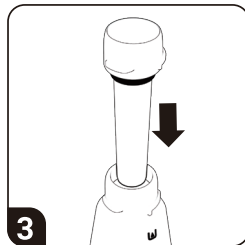


**5** Close the back cover after it is aligned with the slot.

## How to fill water in carbonating bottle



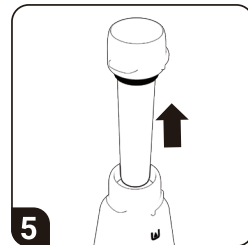
**1** Remove the dust cover spout protection and filling aid from the bubble water machine.



**3** Insert the dust cover spout protection and filling aid into the carbonating bottle neck (press the red part into the bottleneck).

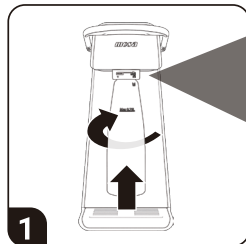


**4** Fill in the water until it reaches the top of the spout protection and filling aid. Of course you can fill the water directly into the bottle without using the spout protection and filling aid by just observing the filling line on the bottle.

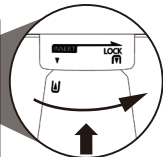


**5** Pull out the dust cover spout

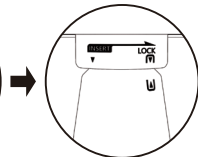
## Carbonating the Water



**1** Insert the carbonating bottle into the air spout and turn it upwards until it is in place.



The arrow on the bottle (▲) with the snap-lock label (▼) and then turns the bottle counter clock-wise.



Once the arrow (▲) on the bottle is aligned with the label snap-lock label (▼), the carbonating bottle is secured in place.



**2** Press the U-shaped handle down and let it go when you hear an air release sound from the back of the bubble water machine.



**3** Release the U-shaped handle and wait for a moment before you hear the sound of excess CO2 being released. Once the sound has stopped, you can turn the carbonating bottle down to remove it.

## Suggestions

- 1 For best results it is recommended to use cold water at 2-7°C to fill the stainless steel bottle, before carbonating.
- 2 Always follow the instructions in the user guide. If you don't use the dust spout protection and filling aid for the spout to fill the water, excessive overfilling the bottle may damage the bubble water machine or cause water to spill out. If you don't use the dust spout protection and filling aid, the water volume should be 750~760cc.
- 3 After removing the bottle with carbonated water, place the dust spout protection and filling aid back on the bubble water maker to prevent the carbonation spout from getting dusty.
- 4 If you do not drink the content of the bottle within about 10 minutes, put the cap on the bottle and place it in the fridge to prevent the CO2 from evaporating.

## Must-know for cleaning

Item	Cleaning method	Precautions	Dishwasher safe
<b>mosa UBAR Bubble Water Machine</b>	Wipe it clean	Never use strong acids or alkalis	NO
<b>Carbonating bottle</b>	Clean it like a stainless steel bottle	Never use abrasive cleaners or sharp tools to clean	YES
<b>Water tray</b>	Wipe it clean	Never use abrasive cleaners or sharp tools to clean	YES
<b>Dust spout protection and filling aid</b>	Rinse it with water	Never use strong acids or alkalis	NO

## Conditions and materials that do not apply

- Only carbonate pure cold water, do not insert any other ingredients into the water before carbonating it! You can prepare a multitude of tasty soda creations by mixing ingredients like sirups- juices or herbs with the bubble water in the drinking-glass.
- Do not add other beverages or ingredients such as alcohol, milk, juice, syrup, honey or other ingredients when making bubble water. Only drinking water is allowed.

## For Your Safety

- Place the bubble water machine on a flat and stable surface, keep it out of the reach of children to avoid the bubble water machine being knocked over or dropped.
- Do not leave your bubble water machine or CO2 cylinder in direct sunlight and do not place them above 40°C or below 0°C. Keep away from heat, fire and hot surfaces.
- Make sure that the CO2 cylinder and the carbonating bottle are secured in the correct position before use.
- Slowly press the U-shaped handle down and let it go as soon as you hear the air release sound.
- Please make sure that the bubble water machine is in an upright position when you use it.
- Do not place the bubble water machine in the water; it is prohibited to remove the carbonating bottle or CO2 cylinder when it is being operated.
- Never carbonate the empty carbonating bottle.
- Do not disassemble the bubble water machine; do not attempt to repair by yourself

## Warning



### Explosion Warning:

Heat will increase the internal pressure in the CO2 cylinder and cause the CO2 to be released. If a CO2 leak is detected, remove from heat-source immediately and wait until the CO2 leak is over before touching the CO2 cylinder.



### Frostbite Warning:

CO2 cylinders can freeze due to the pressure releases and heat absorption during the carbonation. Do not touch the cylinder as this may cause frostbite to the skin.



### Be aware of the pressure release sound:

If you do not hear a pressure release sound during the carbonation, check if there is still pressure left in the carbonating bottle. Please check the U-shaped handle again to ensure that it is restored to its original position.



### Freezing Warning:

It is normal for the water in the bottle to be cooled due to the CO2 pressure release and heat absorption during the carbonation.



## Troubleshooting

Abnormalities	Solutions
No CO2 filled into the carbonating bottle after the U-shaped handle has been pressed down	<ol style="list-style-type: none"> <li>1. The CO2 in the cylinder has run out. Please replace the cylinder by a new one.</li> <li>2. The CO2 cylinder was not properly screwed into position, please reinstall it.</li> </ol>
There is a sound of air leakage when the U-shaped handle is pressed down	<ol style="list-style-type: none"> <li>1. The water bottle is not properly screwed into place, remove the bottle and reinstall it.</li> <li>2. The CO2 cylinder is not properly secured in position, remove the cylinder and reinstall it.</li> <li>3. If the seal of the CO2 cylinder is aged or damaged, please replace the seal according to the replacement instructions.</li> <li>4. If there is only a short sound of air leakage after loosening the U-shaped handle, it is normal because the air exhaust mechanism is working.</li> </ol>
There is a sound of air leakage when the U-shaped handle is not pressed down	<ol style="list-style-type: none"> <li>1. Please check to make sure the U-shaped handle is positioned back above the mosa logo. If the U-shaped handle is blocking the logo after being returned, please check to ensure no object is jamming the U-shaped handle.</li> <li>2. If the U-shaped handle is in a normal position, then remove the CO2 cylinder and reinstall it.</li> </ol>
There is CO2 coming out but no bubble taste	<ol style="list-style-type: none"> <li>1. Press down the U-shaped handle to make sure you hear a clear air release sound before letting go of the U-shaped handle.</li> <li>2. When filling the water bottle, please use the dust spout protection and filling aid or fill the water bottle with 750-760cc of water according to the instructions.</li> </ol>
Do not hear air release sound when you press down the U-shaped handle	<ol style="list-style-type: none"> <li>1. The CO2 in the cylinder has run out. Please replace the cylinder with a new one .</li> <li>2. If there still is no release sound, maybe too much water has accumulated inside the release mechanism; please place the machine in a dry place to dry out.</li> </ol>

## Product Warranty

Dear Valued Customer,

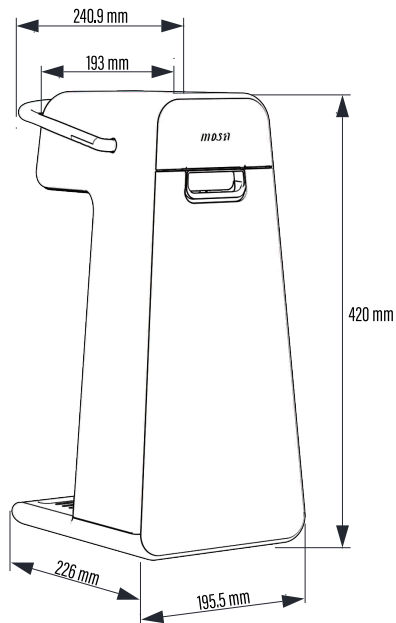
Thank you for purchasing mosa products. We hope the products work to your satisfaction. mosa products are ecological, convenient and designed according to the highest safety standards.

Basic Information						
Name		Tel. No.				
Model No.		Date of Purchased	(C.E.)	Year	Month	Day
Product Lot No.						

- This product is guaranteed for two years from the date of purchase with your product warranty certificate. You are entitled to free repair service for non-consumable parts. (Without presenting this warranty certificate or unable to prove the date of purchase, no complimentary service will be provided)
- For online purchases, the commencement date of the warranty will be the date of purchase as stated on the warranty certificate.
- If your bubble water machine malfunctions within the warranty period due to the following conditions, we will charge you the material cost at our discretion:
  - Failure to operate correctly in accordance with the instructions in the user guide.
  - Product malfunction or damage caused by natural disasters, earthquakes, rodents, pests or environmental factors or force majeure of natural phenomena.
  - Product malfunction or damage caused by shipping and handling.
- We will charge a repair fee for any of the following conditions:
  - The product warranty has expired.
  - Product malfunctions or damages that were a result of improper repair, disassembly, or alteration.
  - Failure to present the warranty certificate.
  - Please keep the warranty certificate in a safe place as it will not be replaced if it is lost or damaged.
  - All the parts of our products have a shelf life. If the parts are no longer available, we will repair the product with equivalent parts from existing products.
  - Product malfunction or damage caused by the use of CO2 cylinders other than mosa brand.
- The stainless steel carbonating bottle is a pressure resistant bottle and is considered to be a consumable item, which is covered by a one-year warranty from the date of purchase. If the stainless steel bottle is strongly hit, or if the bottle is found to be out of shape, dented, cracked or discolored, there is a risk of explosion. It must be replaced with a new one immediately and must not be used again.

Distributor's Seal

Product Warranty Label



約4.0kg



約1.1kg



約0.3kg



約5.4kg

# ***mosa***<sup>®</sup> UBAR Bubble Water

製造商：元翎精密工業股份有限公司  
地址：中部科學園區虎尾園區  
雲林縣虎尾鎮科虎三路18號  
股票代號：4564  
官方網站：[www.twmosa.com](http://www.twmosa.com)

製造商：元翎精密工業股份有限公司  
地址：中部科學園區虎尾園區  
雲林縣虎尾鎮科虎三路18號  
官方網站：[www.twmosa.com](http://www.twmosa.com)

Manufacturer: Mosa Industrial Corp.  
Address : Huwei Science Park, Central  
Taiwan Science Park  
No.18, Kehu 3rd Rd., Huwei Township,  
Yunlin County  
Website: [www.twmosa.com](http://www.twmosa.com)



操作說明

